

# Customer Success

Engine Division



## CANADA – ZERO HOUR OVERHAUL

Engine model: P9390GSI			
<b>Power</b>	2030 Horsepower	<b>Length</b>	160' (4.67 Meters)
<b>Speed</b>	1200 RPM	<b>Width</b>	78' (1.98 Meters)
<b>Height</b>	112' (2.85 Meters)	<b>Weight</b>	28,750 lbs. (13,041 kg)

### FACTS IN BRIEF

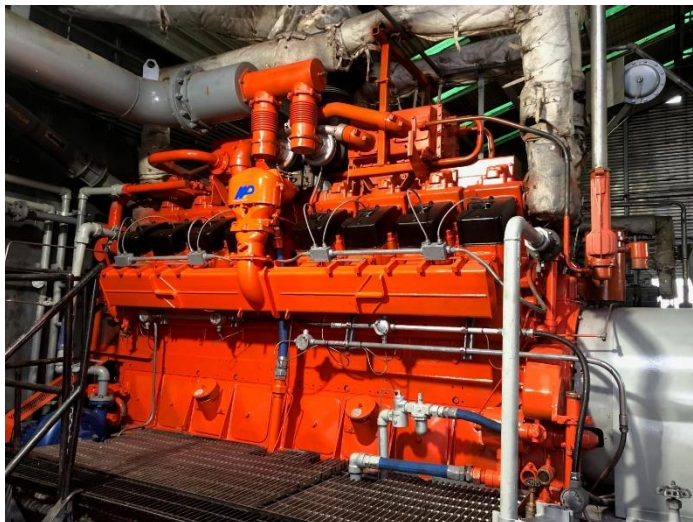
- Engine was due for scheduled maintenance
- Internal coolant leak requiring removal of engine

### SOLUTION APPLIEDs

- WPI factory trained technicians performed complete Shop Overhaul

### RESULTS

- Quick turnaround



Finished P9390GSI Engine