



# GENERATOR UNITS AVAILABLE - READY TO GO!

6 X WAUKESHA L5794GSI-EPA GENERATORS  
8 X WAUKESHA L7044GSI-EPA GENERATORS

## SPECIFICATIONS

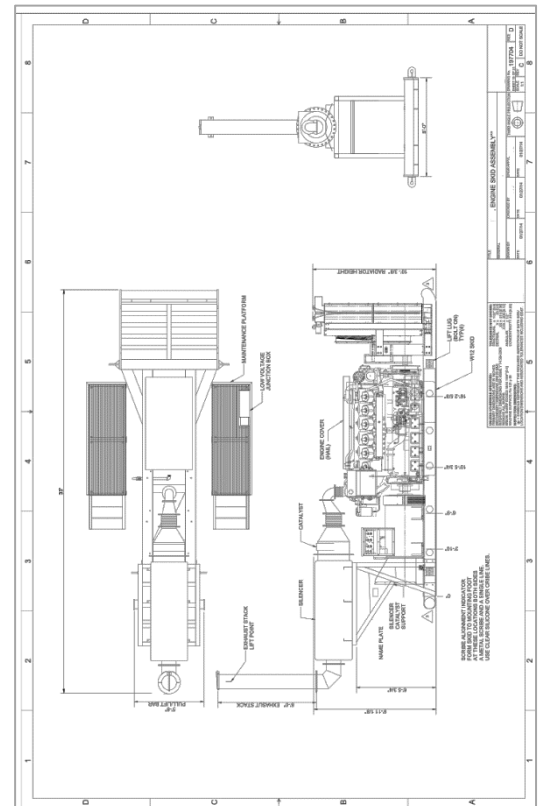
Engine	Waukesha L5794GSI-EPA
Generator	Leroy Somer LS661-04 930Kw, 480V
Radiator	API Radiator 5592/AS1 or Equal
Control Panel	ECP8000E - shipped loose
Design	Open Skid

## MAKE READY SCOPE

Make ready to include, complete engine inspection i.e. cylinder heads, base, engine roll over, cylinder head, bore scope, engine alignment, replace all belts, spark plugs, filters, and clean and paint unit to customer specifications. Any parts replacement beyond belts, filters and plugs would be an additional charge at published labor and parts rates. Engine test run with 2-hour load test on 200KW load bank. Additional 4-hour full load test available for an additional charge of \$3500 per unit

## WARRANTY

WPI will offer warranty on all make ready labor and parts installed during make ready, Engine, Generator and all associated controls will be offered as is where is.



## SPECIFICATIONS

Engine	Waukesha L7044GSI-EPA
Generator	1.2 MW
Radiator	-
Control Panel	Waukesha – ECP8006E
Design	Arctic Enclosed



SCAN QR CODE TO SEE MORE





## WPI Canada offers power generation solutions perfectly suited for both standby and prime power applications

Whether you are running critical equipment or powering your jobsite, WPI Canada offers industry-leading power generation solutions backed by experts with an unmatched level of support. We support the highest-quality lines of gas, diesel, bi-fuel and LP engine-driven powered generators, while also offering custom-fabricated solutions, power generation service and parts for limitless possibilities.

- Exchange or zero-hour reman
- Planned Maintenance
- Troubleshooting
- Warranty repairs
- 24/7 availability of genuine parts and service
- Arctic enclosed package or open skid package
- Fabrication of custom systems
- Field and shop repairs & overhauls
- Installation & startup
- Load bank testing

### INTERESTED? CONTACT US!

## WPI CANADA INC.

3365-10<sup>th</sup> Street  
Nisku, AB T9E 1E7

**Office:** +1-780-955-7000  
**Toll Free:** +1-844-534-0852

 [REQUEST A QUOTATION HERE](#)

